



OVERVIEW & SCRUTINY COMMITTEE

8 September 2020

Subject Heading:

Briefing on Green Space Verge Conversions

SLT Lead:

Barry Francis, Director of Neighbourhoods

Report Author and contact details:

Gurch Durhailay, Business Unit Manager,
HT&P

Gurch.durhailay@havering.gov.uk

Policy context:

Parking Strategy agreed in December 2018

Financial summary:

Highways Improvement Programme, Capital
Budget Allocation of £806,000 (A3000)

The subject matter of this report deals with the following Council Objectives

Communities making Havering
Places making Havering
Opportunities making Havering
Connections making Havering

[x]
[x]
[]
[]

SUMMARY

Due to the number of complaints received by the service over a period of years from members of the public and requests to Councillors asking that green space be converted to parking bays, it was decided that areas from which requests are being received be considered for this work and funds be found for converting green space to hard standing parking areas.

The service contacted all councillors and asked them to provide details of areas where they are getting pressure from residents requesting verge conversion work. This information was collated along with direct requests from residents. An external consultancy was commissioned to carry out a review of over 70 locations and to provide a report on the findings with recommendations for each location. Out of the 70 locations, 48 were found not to need conversion to hard standing, some of these would however benefit from the addition of yellow lines to aid access etc. This left 22 locations which were then scored. Locations were then scored based on various criteria as detailed in the draft report appended to this briefing.

The scoring was based on criteria which includes:

- Parking/traffic/safety issues,
- Complaints from public and refuse collection difficulties,
- A simple scoring method was also used in order to assist and evaluate the sites. Benefit for residents are scored as well as verified delays to refuse collection. Scores were lost for utility underground connections, as each underground utility item poses extra cost which in some case more than double cost of a scheme.

The final list of locations that will be progressed as per the ED report are:

- 1- LODGE COURT,
- 2- KINGSBRIDGE CLOSE,
- 3- PENZANCE GARDENS,
- 4- DAVENTRY GREEN (off Hailsham Rd),
- 5- KINGSBRIDGE CIRCUS, NEW,
- 6- REDRUTH WALK,
- 7- DAGNAM PARK SQUARE,
- 8- HALESWORTH CLOSE, NEW

An ED report has been drafted to request that green space in areas where it has been demonstrated that there is a need for parking are converted to hard standing parking. The report has been circulated to business partners and comments received and included as part of this report. The next step is to revise the report based on comments received and submit to theme board.

The report and its progression through the Council's decision making process has been put on hold due to Covid and has been programmed to progress in November/December 2020.

RECOMMENDATIONS

It is recommended to the committee that a report progresses through the decision making process from November/December this year in regards to green verge conversions.

REPORT DETAIL

A report is currently being drafted which will be progressed through the decision making process. The report details the locations that were considered, the scoring process, costs, the number of parking spaces before and after the works and the locations which will be subject to a local consultation with residents to seek their view before any work is done.

IMPLICATIONS AND RISKS

Financial implications and risks:

This project investigated 70 locations where complaints were received. Of these 70 locations, this paper has identified the top scoring locations. The highlighted green locations are 8 items which amounts to estimated civil works of £733,000. This scheme will also attract other costs estimated at £73,000. The HIP Capital Budget 2020-21 has allocated £806,000 to meet the estimated costs of this project. The Scheme has already incurred expenditure of £63,000 in 2019/20, this has been met from the HIP Capital Budget in 2019/20.

All future schemes relating to the 70 locations will be subject to further Key ED's and will at that point, detail the corresponding funding arrangements.

Legal implications and risks:

We do not require a TMO for the civil works element for converting verges into hardstanding areas. However, we would require a new TMO for proposed for short lengths of Double Yellow Lines at junctions/bends in order to improve road safety and access. Also, the proposed parking bays are advisory bay markings and are not enforceable, therefore this element would not require a new TMO.

The Council's power to make an order creating a controlled parking zone is set out in Part IV of the Road Traffic Regulation Act 1984 ("RTRA 1984").

Before an Order is made, the Council should ensure that the statutory procedures set out in the Local Authorities Traffic Orders (Procedure) (England & Wales) Regulations 1996 (SI 1996/2489) are complied with. The Traffic Signs Regulations and General Directions 2016 govern road traffic signs and road markings.

Section 122 RTRA 1984 imposes a general duty on local authorities when exercising functions under the RTRA. It provides, insofar as is material, to secure the expeditious, convenient and safe movement of vehicular and other traffic (including pedestrians) and the provision of suitable and adequate parking facilities on and off the highway. This statutory duty must be balanced with any concerns received over the implementation of the proposals.

Environment Overview & Scrutiny Sub-Committee 08/09/20

In considering any responses received during consultation, the Council must ensure that full consideration of all representations is given including those which do not accord with the officer's recommendation. The Council must be satisfied that any objections to the proposals were taken into account.

In considering any consultation responses, the Council must balance the concerns of any objectors with the statutory duty under section 122 RTRA 1984. This section provides for the exercise of the Council's powers for highways functions.

Local Authorities also have a general power of competence to undertake matters which an individual may undertake in accordance with Section 1 of the Localism Act 2011.

Human Resources implications and risks:

The proposal can be delivered within the standard resourcing within Street Management, and has no specific impact on staffing/HR issues.

Equalities implications and risks:

The Public Sector Equality Duty (PSED) under section 149 of the Equality Act 2010 requires the Council, when exercising its functions, to have due regard to:

- (i) The need to eliminate discrimination, harassment, victimisation and any other conduct that is prohibited by or under the Equality Act 2010;
- (ii) The need to advance equality of opportunity between persons who share protected characteristics and those who do not, and;
- (iii) Foster good relations between those who have protected characteristics and those who do not.

Note: 'Protected characteristics' are age, sex, race, disability, sexual orientation, marriage and civil partnerships, religion or belief, pregnancy and maternity and gender reassignment.

The Council is committed to all of the above in the provision, procurement and commissioning of its services, and the employment of its workforce. In addition, the Council is also committed to improving the quality of life and wellbeing for all Havering residents in respect of socio-economics and health determinants.

It is both Council policy and recently renewed SLT direction/expectation that EqHIAs (Equality and Health Impact Assessments) are carried out when appropriate and in sufficient time to enable informed decision-making. As a basic rule, one should be undertaken whenever staff, service users, or the wider public are impacted by decisions or the intended or planned activity. The relevant template with guidance is available from diversity@haverling.gov.uk and the intranet and its purpose is to ensure a systematic approach to the task and to evidence that due regard is paid to any adverse impact on affected parties with protected characteristics. In addition to the nine protected characteristics, the assessment also looks at matters pertaining to health and socio-economics, respectively.

Another accepted way to demonstrate due regard is to produce minutes of meetings which clearly show equality implications of the intended activity were fully discussed and understood by decision-makers. The status of EqHIAs can be 'completed' or 'under development', with a view to completion before any final decisions are reached. Where legal challenges occur, completed EqHIAs can often become items of evidence in related proceedings. Finally, if an EqHIA is not to be carried out authors should state the reason in the equality section of their report. Do consult the corporate diversity advisor if clarification or support is needed.

Consultation

Consultation with affected parties is essential to good practice. In terms of administrative law this has a specific meaning, and if done should be proportionate, fair, and inclusive. Sufficient time and information should be afforded to allow consultees to comment meaningfully on the matter in hand and the responses taken conscientiously into account by the decision maker.

HEALTH AND WELLBEING IMPLICATIONS AND RISKS

The proposal will address vehicular access issues giving improved accessibility for emergency and service vehicles for the identified 8 areas which are mainly residential.

The proposals will improve parking supply enabling further parking areas for residents to park. However, this may increase traffic movements and may not meet parking demand.

APPENDICES

Appendix A –List of initial 70 Locations

Appendix B – Detailed design of the final locations

Appendix C – Scoring for schemes

Appendix A –Initial 70 Locations

Location	Ward Area	desktop exercise/observations
AMERSHAM CLOSE	Harold Wood	Need DYL on junction and on both sides of road, and then consider 90 degree parking bays on grass verge.
CATHERINE ROAD	Squirrels Heath	can not see any parking issues
DUNSTER CRESCENT	Cranham	Need DYL on junctions and bends, and would benefit One-way operation
EVELYN SHARP CLOSE	Squirrels Heath	Need DYL on junction and footway markings
HITCHIN CLOSE	Heaton	Need new DYL on Hitchen Close j/w Taunton Rd, need to mark out footway parking bays, need more DYL on junctions,
INGREBOURNE GARDENS	Cranham	Long road, need DYL on junctions, mark out parking bays within yellow lines, to slow traffic and prevent grass areas.
KERRY DRIVE	Cranham	need DYL for private access roads entrances and bend, and end of cul-de sac. Also consider Footway bay markings.
LONDONS CLOSE	Upminster	Review current DYL on junction, need DYL on private access entrances, and at the turning head at end of road
MACDONALD WAY	Squirrels Heath	Need DYL on junction, relocate footway parking on the opposite side of road , as you should get one more parking space, also there are no footway covers or columns/posts.
MURFITT WAY	Upminster	Consider DYL at the end of cul-de sac and footway bays markings
ROWAN WALK	Squirrels Heath	The google maps are 5 years old , need DYL on junction, and on bends, review single yellow lines to DYL. Could not see any parking on verges or evidence on-screen.
THE COBBLES	Cranham	can not see any parking issues
THE MOUNT	Heaton	Review current DYL on junction. Refresh Give-way markings, review current drop-kerbs as there are mud - possibly widen drop-kerbs. Review and extend current footway parking markings - only on tarmacked footways. Tarmac the two grass verges at the end of road to allow large vehicles to turn around.
WOODLANDS AVENUE	Emmerson Park	Need DYL on junctions and possible footway markings - too many off-street parking
BROSELEY ROAD	Gooshays	Yes - needs review to look at possible options.
DAGNAM PARK SQUARE	Gooshays	Yes - grass verge, DYLs
DORKING RISE	Gooshays	Needs further review before taking forward
ELM PARK AVENUE	ST ANDREWS	Is a bus route, consider footway parking bays.
NORTH HILL GREEN	Gooshays	Yes - needs review to look at possible options.

Environment Overview & Scrutiny Sub-Committee 08/09/20

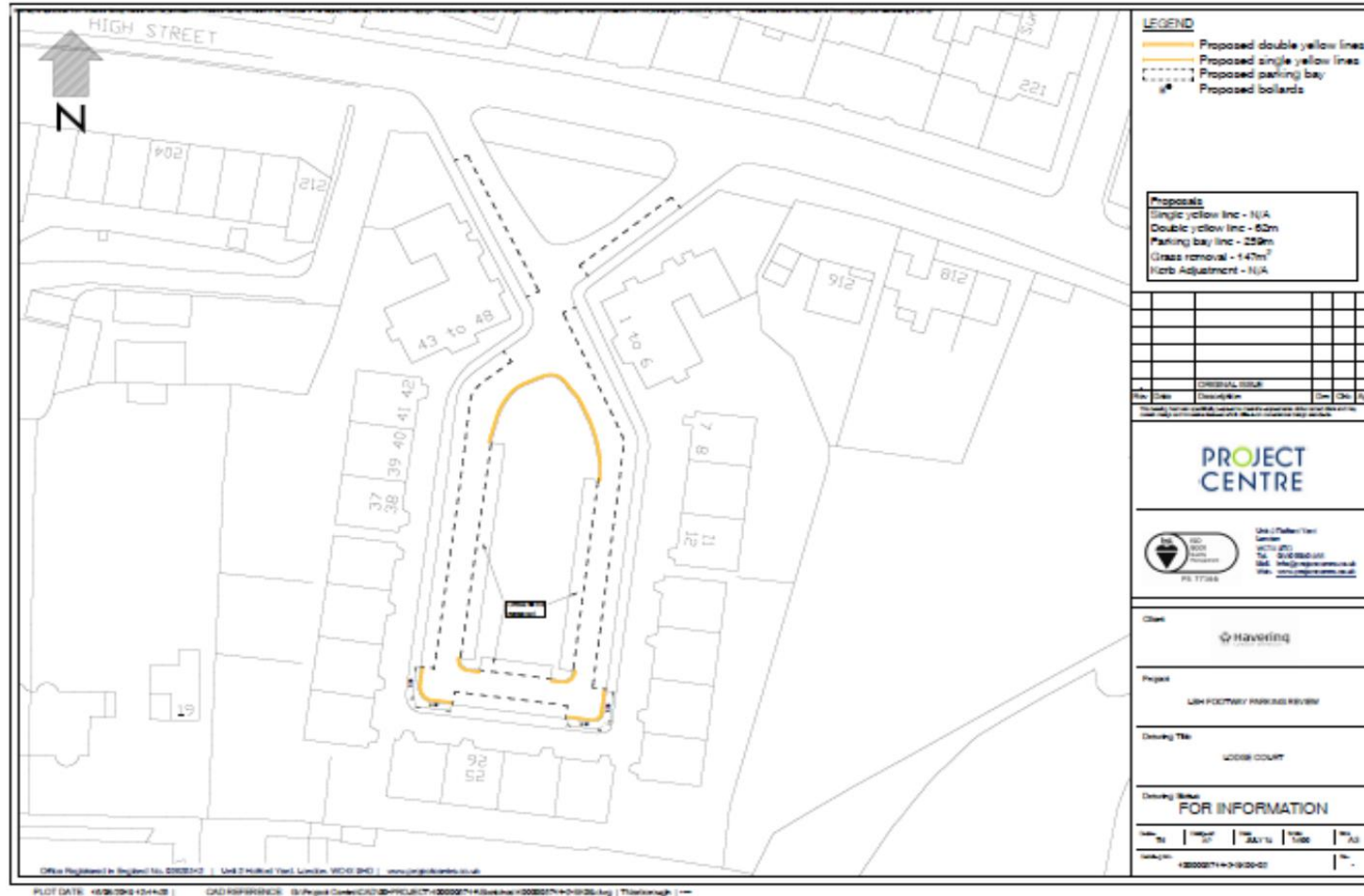
PENRITH ROAD	Gooshays	Triangle section of green can be looked at parking
PENZANCE GARDENS	Gooshays	Yes - grass verge, DYLs
PRIORY ROAD	Gooshays	Yes - needs review to look at possible options.
REDRUTH WALK	Gooshays	Yes - needs review to look at possible options.
SACKVILLE CRESCENT	Squirrels Heath	review/ consider footway parking
SOUTH VIEW DRIVE	Upminster	review Single Yellow Lines, and consider formal parking bays
SPRINGFIELD GARDENS	Upminster	long road, consider removal of grass verge and concrete for parking, consider marking out parking bays
SWINDON GARDENS	Gooshays	Yes - needs review to look at possible options.
WIGTON ROAD	Gooshays	Yes - needs review to look at possible options.
WIGTON WAY	Gooshays	Yes - grass verge, DYLs
APPLEBY GREEN - off Hailsham Road	Heaton	Consider DYL on one future entrance, look parking on grass areas.
BARNESLEY ROAD	Harold Wood	Consider DYL, and possible footway bay markings
BARNSTAPLE PATH - off Montgomery Crescent	Harold Wood	Consider DYL, a section of footway is been driven on, consider access road - and parking on grass verge
DAVENTRY GREEN (off Hailsham Rd))	Heaton	Consider DYL on one future entrance, look grass areas as access road onto front gardens.
HALL LANE	Harold Wood	road too long, side service roads
KINGSBRIDGE CLOSE	Harold Wood	Review current DYL, and extended where needed, consider 90 degree parking on grass verges. Also measure width of carriageway and consider widening road to 5m minimum.
MELKSHAM CLOSE	Harold Wood	Consider DYL, a section of footway is been driven on, consider access road - and parking on grass verge
MESSANT CLOSE	Harold Wood	Consider DYL, and possible footway bay markings
RUTLEY CLOSE	Harold Wood	Consider DYL on both sides, to access rear buildings/car park.
SUNNYDENE CLOSE	Harold Wood	Review current yellow lines, and outline areas of parking stress
DOWNHAM CLOSE	Mawneys	Consider DYL on junction and turning area, and parking on grass verge
GABRIEL CLOSE	Havering Park	Consider DYL or parking on footway
NOAK HILL ROAD	Heaton	Consider DYL on junction and turning area, and parking on grass verge
NORTH ROAD	Havering Park	road too long need info of parking issues
ROBIN CLOSE	Havering Park	Consider DYL on turning area, set back by 1m the green railings, repair/replace with wooden posts consider more parking in the grass verge area.

Environment Overview & Scrutiny Sub-Committee 08/09/20

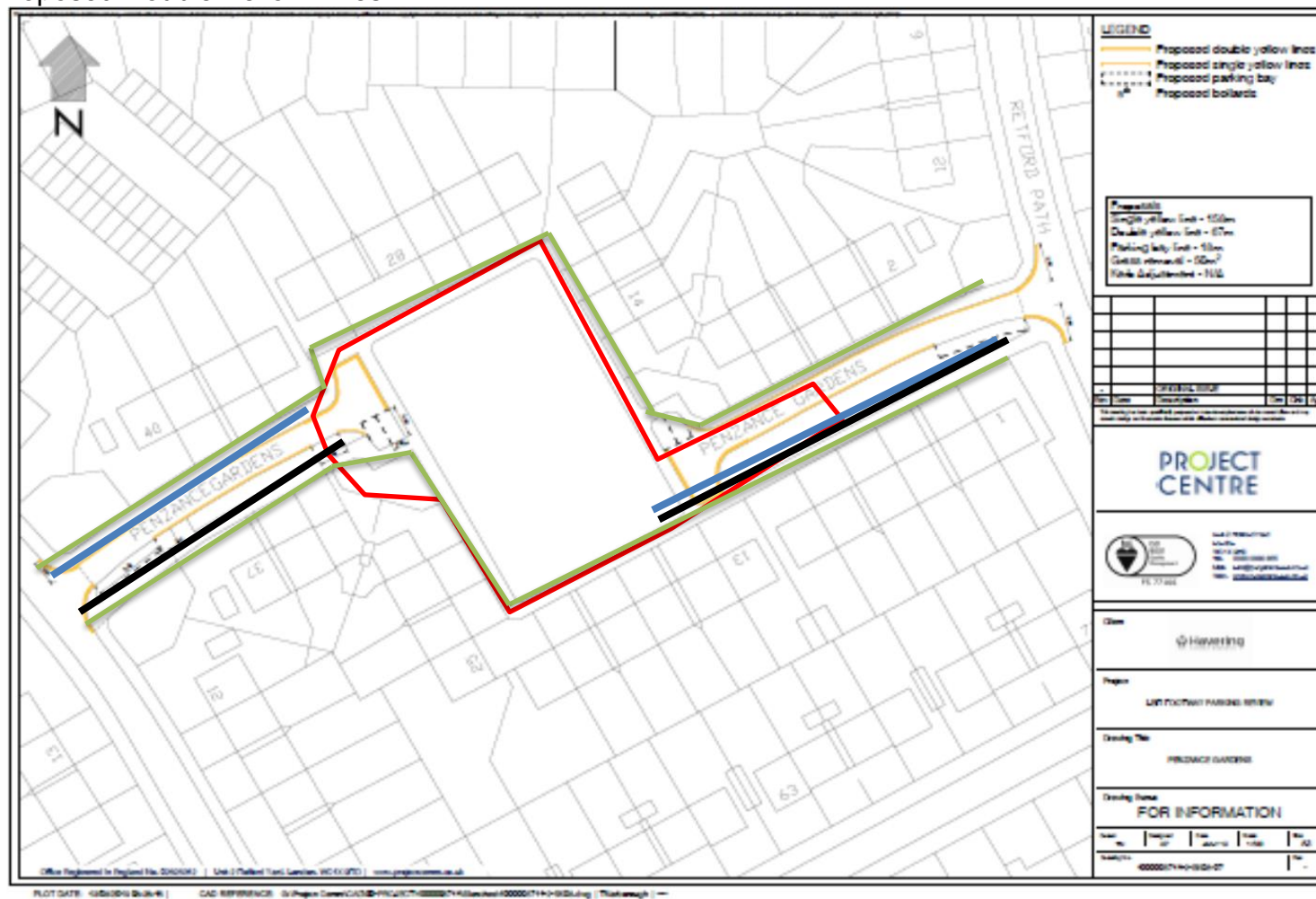
ST JOHNS ROAD	Havering Park	Consider DYL on junctions, consider footway parking, consider 2-4 wheel parking on grass verge. Stagger parking so that vehicles speeds do not increase.
ASTRA CLOSE	Elm Park	Consider DYL and footway parking bays.
BENJAMIN CLOSE	Romford Town	Review SYL and consider DYL
BIDEFORD CLOSE	Heaton	Consider DYL especially on narrow private road, consider grass verge parking
BURNHAM ROAD	Brooklands	Review current SYL into DYL.
HAYSOMS CLOSE	Romford Town	Consider DYL and footway parking bays.
LONGTOWN ROAD	Heaton	Congested road, consider DYL and mark out footway parking bays width 1.8m.
MARINA GARDENS	Brooklands	Consider DYL and footway parking bays.
FONTWELL PARK GARDENS	Hacton	Consider DYL on western side of street. Cut back vegetation on eastern section of road and consider footway parking. Consider new footway on western section flank wall of 15A Newmarket Way.
HAZEL CLOSE	St Andrews	Consider DYL and footway parking bays.
HORNCHURCH ROAD	St Andrews	road too long
LANGHAM COURT	St Andrews	Consider DYL and footway parking bays.
LODGE COURT	St Andrews	Consider DYL and parking on the middle grass verge track refuse vehicle turning circle.
MIRAMAR WAY	Hacton	Consider DYL on entrances & junction. Consider footway parking bays
RAVENSCOURT GROVE	St Andrews	Road too long, consider DYL, and parking bay markings, and 2 wheels on grass verges.
ANCHOR DRIVE	Rainham And Wennington	Consider DYL across private entrances, and allow two wheel footway parking
CHURCH VIEW	Upminster	Consider DYL, and allow two wheel footway parking - on two sections across driveways
HALESWORTH CLOSE,	Rainham And Wennington	Local residents & Leader wanted more parking and able to park on large roundabout. The area as parking needs to be identified. And formalise the two road entrances onto roundabout with a TMO for One-way around roundabout.
LITTLE GAYNES LANE	Upminster	Road too long, review grass verges at drop kerbs - as they may need widening. There is a need to install/review kerbstones and informal gravel driveways.
LIVINGSTONE TERRACE - off Stanley Road North	South Hornchurch	not able to provide parking as its become a narrow walking path
OCKENDON ROAD	Upminster	not able to locate issues
THE GLEN	Rainham And Wennington	Consider DYL. Consider two wheel footway parking and running strip on grass verge

Appendix B – detailed design

- 1 LODGE COURT, within Conservation area, re-profile two southern two corners, Cut-in to green areas parallel to kerb line, Proposed Double Yellow Lines. (no utilities on central green space)



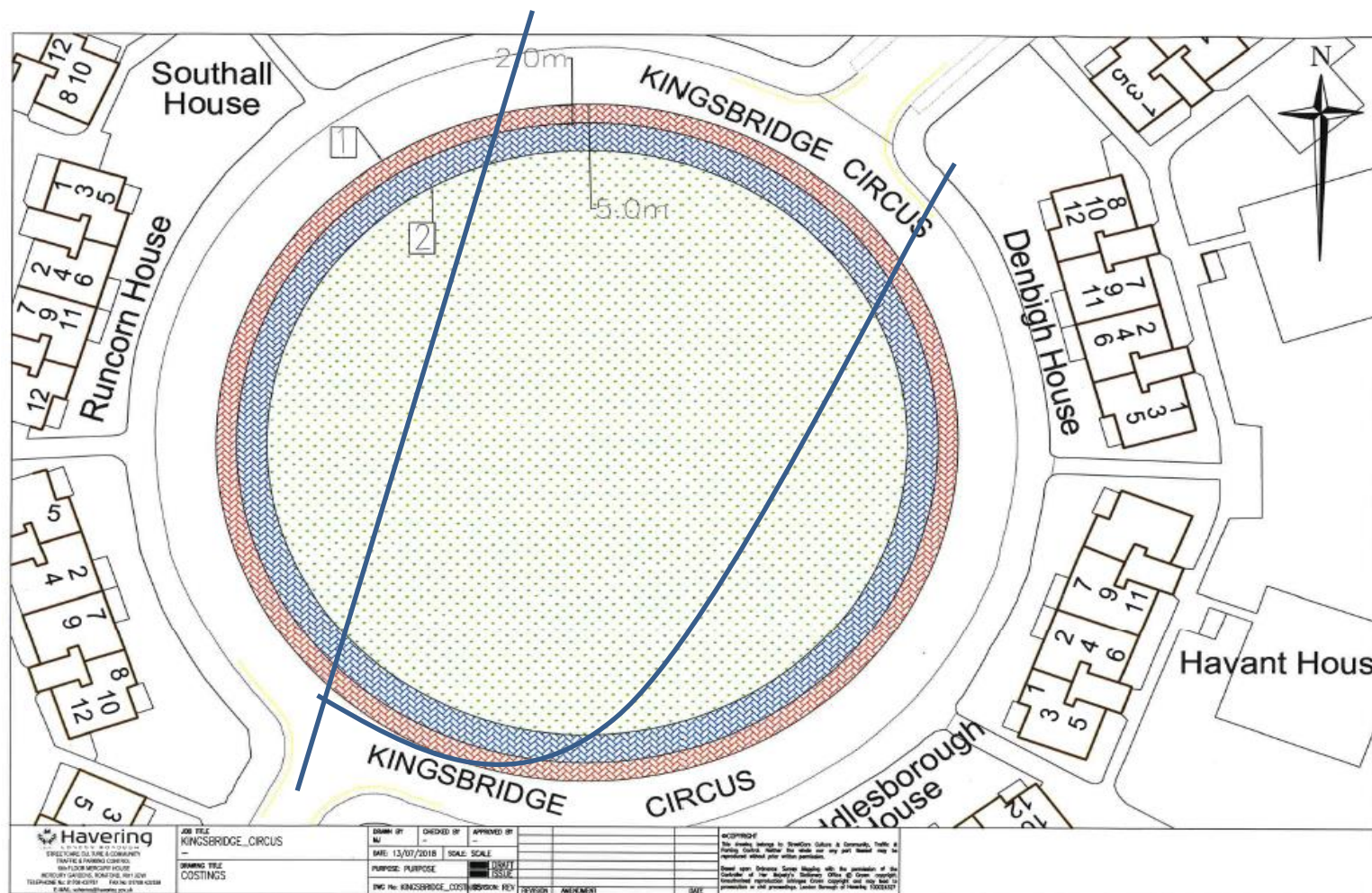


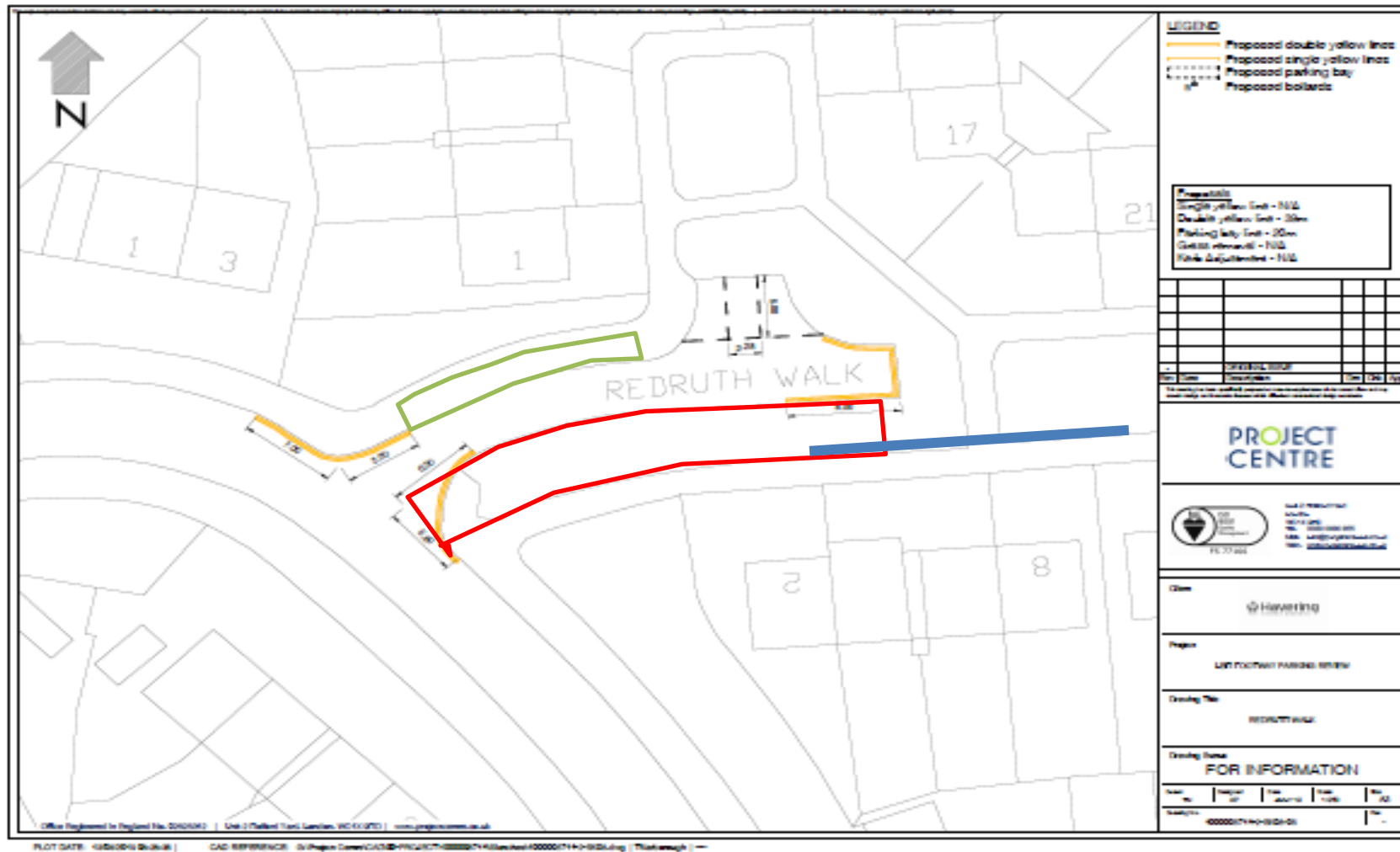


- 4 DAVENTRY GREEN (off Hailsham Rd), Red Line new parking area (Gas blue line, electric yellow line) Proposed Double Yellow Lines

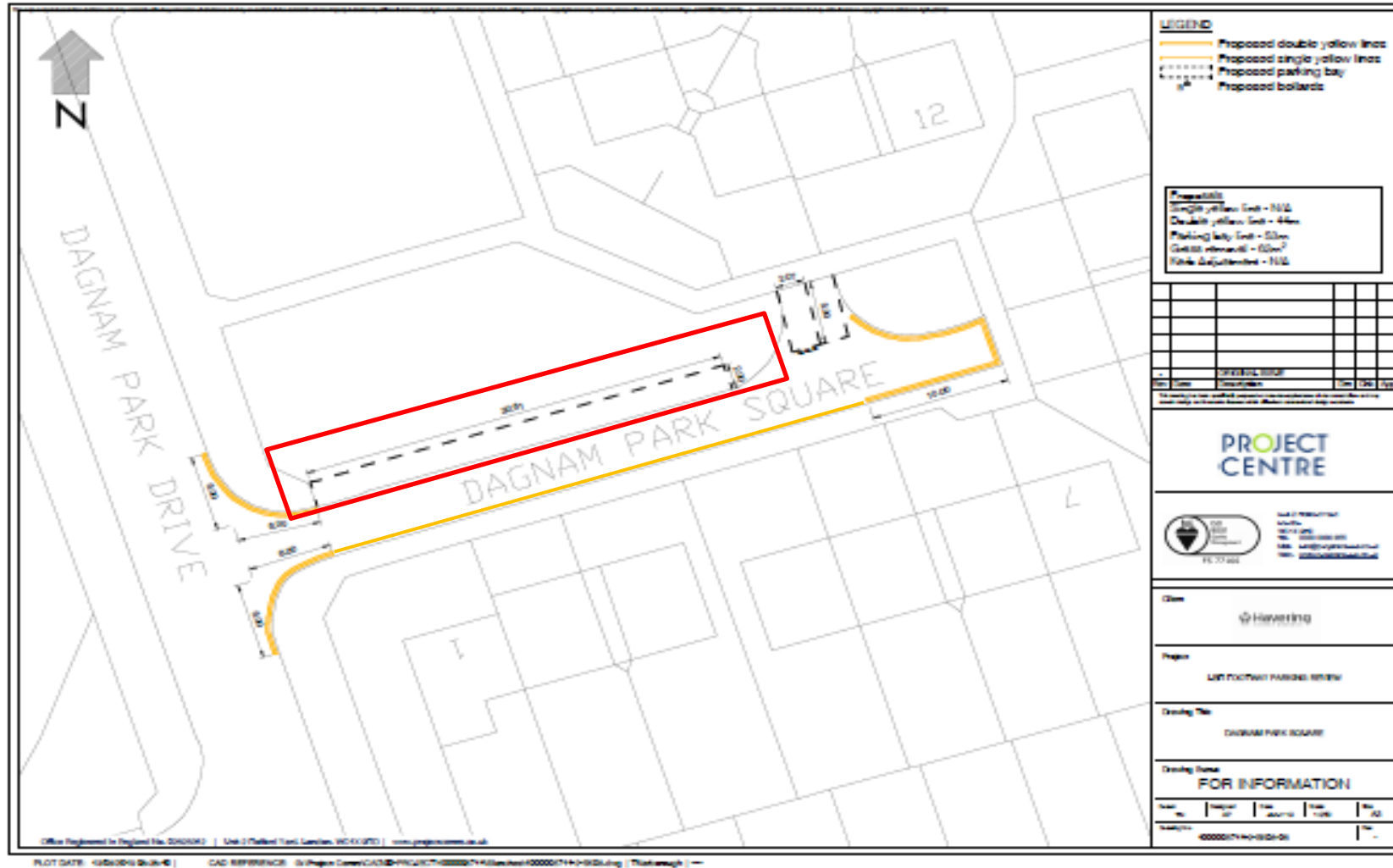


- 5 KINGSBRIDGE CIRCUS, NEW, - red section 3m wide hardstanding (Water blue line), proposed formal One-way operation & Double Yellow Lines

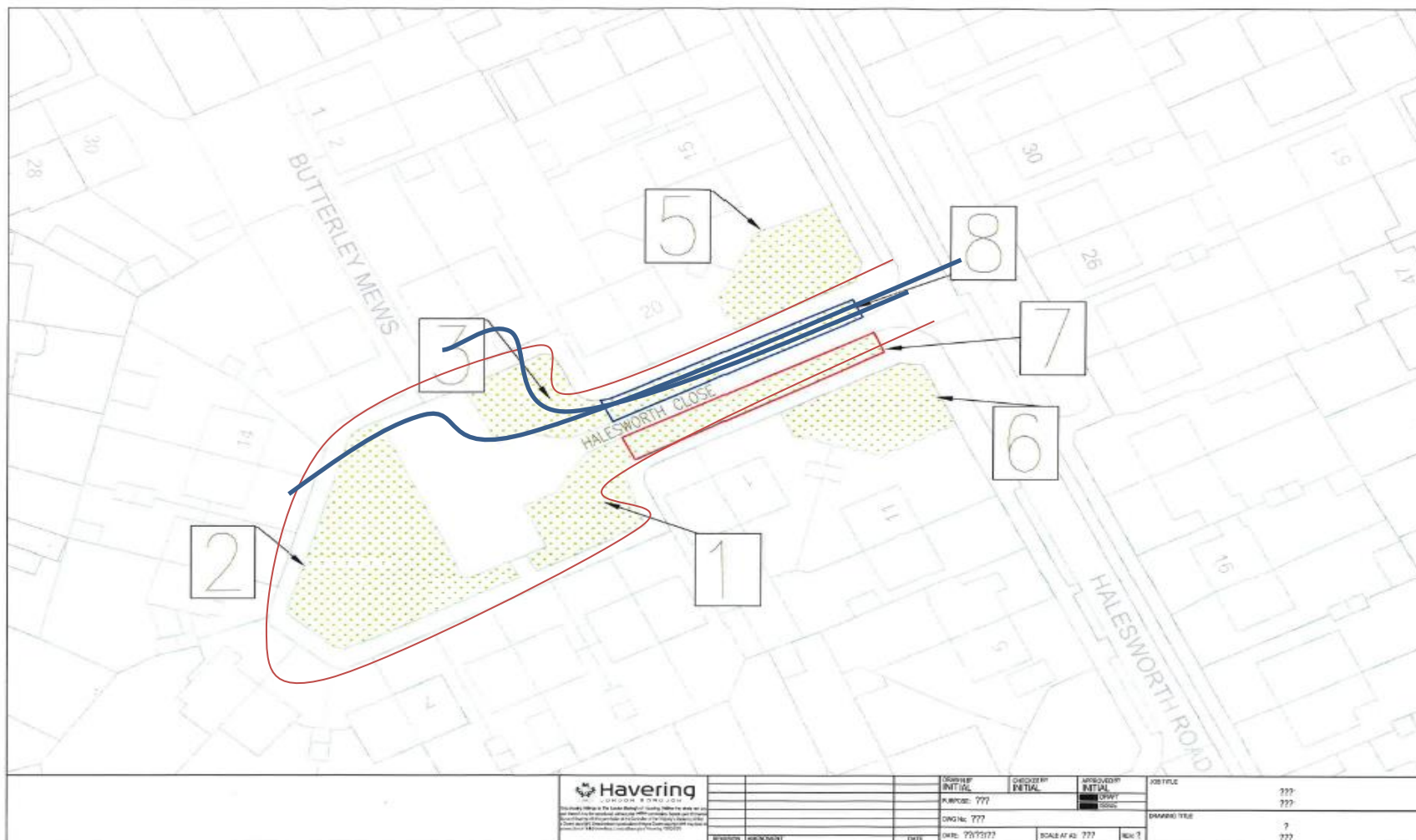




7 DAGNAM PARK SQUARE, Proposed Double Yellow lines, Red Line area is for new parking area, no utilities.



- 8 HALESWORTH CLOSE, Proposed parking areas are no1, 2 & 7 also need SUDs, (BT & Water Blue Lines, Gas is red line), also need double yellow lines



Appendix C – Scoring for schemes (green are the 8 chosen schemes)

Location	Ward	Issue	Existing spaces	Proposed additional new spaces	Number of Complaints (5 years) from environment	Number of Complaints from environment services	Impact waste collection/access issues	Impact on residents	Utility STAT -100	overall Score (max 200)	Estimated Cost
LODGE COURT	St Andrews	increase parking capacity & access	22	36	3 (includes reports of difficulties of access for waste vehicles)	None	100	100	0	200	£ 76,750
KINGSBRIDGE CLOSE	Harold Wood	poor access and lack of parking	3	8	3	None	90	90	0	180	£ 44,500
PENZANCE GARDENS	Gooshays	increase parking capacity & access	0	20	2	None	100	80	0	180	£ 165,000
DAVENTRY GREEN (off Hailsham Rd)	Heaton	increase parking capacity & access	2	20	0	None	80	70	0	150	£ 55,000
KINGSBRIDGE CIRCUS,	Harold Wood	increase parking capacity & access	38	54	1	None – but fly tipping reported at 5 Ulverston House	80	100	-30	150	£ 180,000
REDRUTH WALK	Gooshays	increase parking capacity & access	2	10	2 (there is a church in the immediate locale)	None	100	70	-20	150	£ 31,250

Environment Overview & Scrutiny Sub-Committee 08/09/20

DAGNAM PARK SQUARE	Gooshays	increase parking capacity & access	3	6	2 (there is a school on this road)	None	80	60	0	140	£	20,500
HALESWORTH CLOSE,	Harold wood	increase parking capacity & access	10	25	8 (issue exacerbated due to limited parking spaces in car park. Housing land?	None	80	100	-50	130	£	160,000
WIGTON WAY	Gooshay	increase parking capacity & access	7	7	1	None	80	70	-30	120	£	47,500
BARNSTAPLE PATH - off Montgomery Crescent	Harold Wood	increase parking capacity & access	2	20	0	04/01/2019 vehicles parking on Montgomery Crescent (Oundle House)causing access issues	80	70	-30	120	£	135,000
ROMNEY CHASE,	Emerson Park	increase parking capacity	7	11	2	None	40	100	-20	120	£	10,000

Environment Overview & Scrutiny Sub-Committee 08/09/20

AMERSHAM CLOSE	Harold wood	poor access and lack of parking	3	8	1	Serco reported back - 7.5 tonn vehicle causing access issues which Mounted the kerb/ verge to exit the close 23 Jan 2019	90	70	-50	110	£	55,000
SWINDON GARDENS	Gooshay	increase parking capacity & access	6	12	2	We have had issues with Swindon Close tight corners vehicles have crossed over the grass	100	100	-100	100	£	80,000
FONTWELL PARK GARDENS	Hacton	improve access	6	6	0	There was pavement works prevent access for collection crews this ended up as a stage 2 complaint	50	70	-50	70	£	17,500

Environment Overview & Scrutiny Sub-Committee 08/09/20

PRIORY ROAD	Gooshays	Improve vehicular access	10	14	2	Near miss reported by Serco 19/03/2019 parked scaffold lorry blocking road causing assess issue.	100	70	-100	70	£	42,000
THE ELKINS	Pettits	increase parking capacity	6	10	0	None	30	30	0	60	£	23,250
APPLEBY GREEN - off Hailsham Road	Heaton	increase parking capacity & access	2	20	0	None	80	70	-100	50	£	135,000
NORTH HILL GREEN	Gooshays	increase parking capacity & access	2	5	2	None	0	60	-20	40	£	35,000
BROSELEY ROAD	Gooshays	increase parking capacity	17	25	0	None	0	40	-20	20	£	85,000
ROWAN WALK	Squirrels Heath	Improve vehicular access	4	4	0	None related to grass conversion but Trees overgrown	30	30	-50	10	£	15,500
WENNINGTON ROAD	Rainham & Wennington	increase parking capacity	10	10	5	None	0	90	-100	-10	£	35,000
LIVINGSTONE TERRACE - off Standley Road Norht	South Hornchurch	increase parking capacity	0	6	0	None	0	50	-80	-30	£	15,000
Total											£	1,463,750



Havering
LONDON BOROUGH